

### BAT ACTIVITY

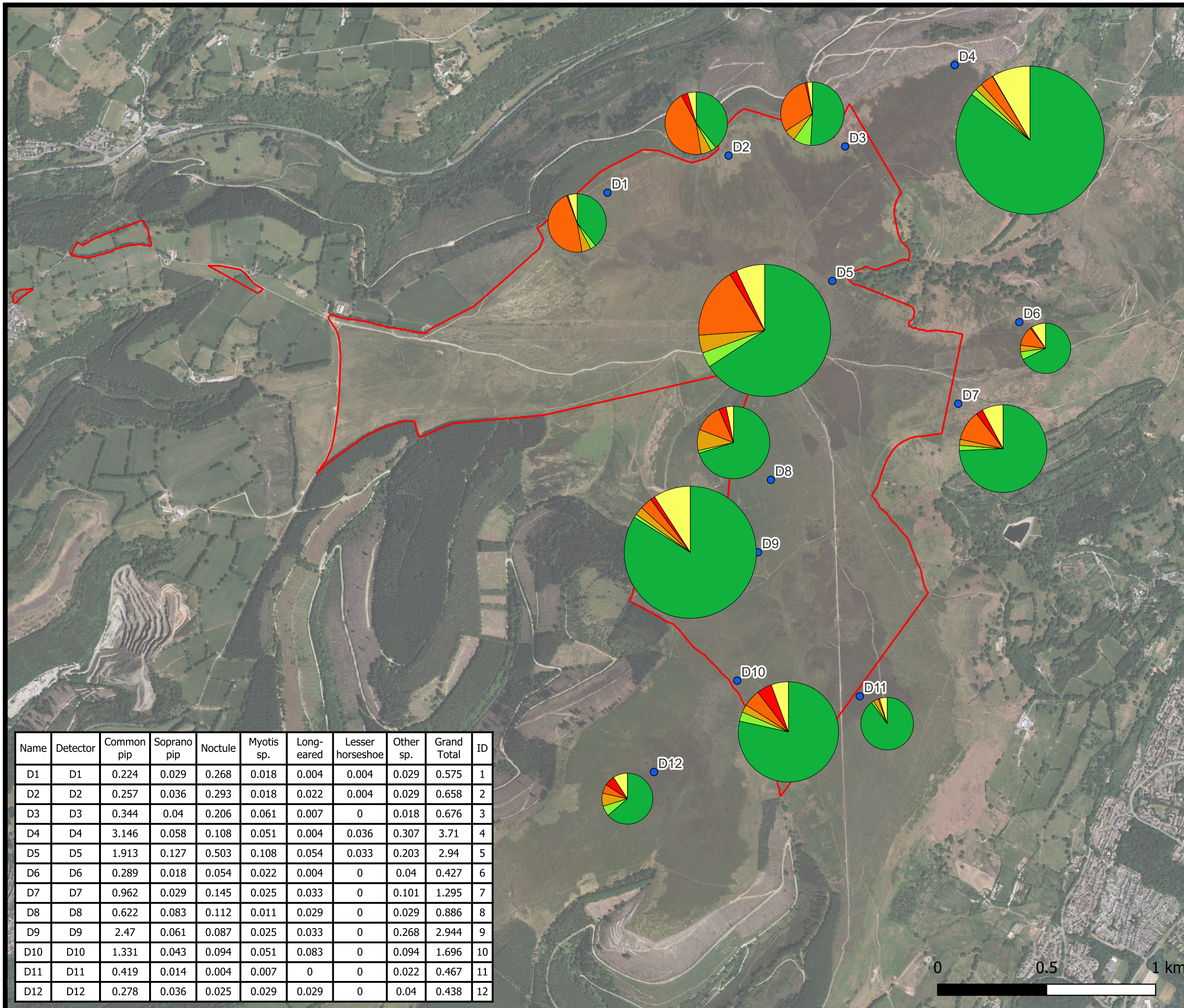
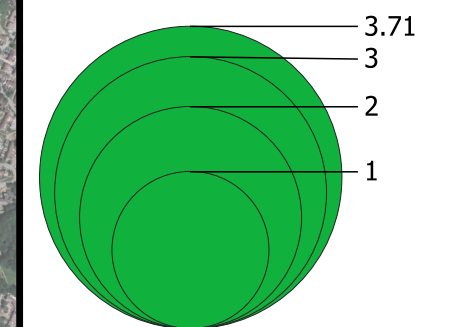
#### FIGURE 6.10

### MYNYDD MAEN WIND FARM

Reproduced from Ordnance Survey digital data © Crown copyright and database rights 2024. All rights reserved. License number 0100031673.  
Aerial Photography © Bing, Microsoft Bing Maps screen shot reprinted with permission from Microsoft Corporation.

#### LEGEND

- SITE BOUNDARY
  - ALL SEASONS BAT ACTIVITY 2021 (SEGMENT SIZE IS PROPORTIONAL TO TOTAL NUMBER OF BAT PASSES RECORDED PER HOUR)
  - COMMON PIPISTRELLE
  - MYOTIS SPECIES
  - SOPRANO PIPISTRELLE
  - NOCTULE
  - BROWN LONG-EARED
  - OTHER SPECIES
- TOTAL ACTIVITY:



| Name | Detector | Common pip | Soprano pip | Noctule | Myotis sp. | Long-eared | Lesser horseshoe | Other sp. | Grand Total | ID |
|------|----------|------------|-------------|---------|------------|------------|------------------|-----------|-------------|----|
| D1   | D1       | 0.224      | 0.029       | 0.268   | 0.018      | 0.004      | 0.004            | 0.029     | 0.575       | 1  |
| D2   | D2       | 0.257      | 0.036       | 0.293   | 0.018      | 0.022      | 0.004            | 0.029     | 0.658       | 2  |
| D3   | D3       | 0.344      | 0.04        | 0.206   | 0.061      | 0.007      | 0                | 0.018     | 0.676       | 3  |
| D4   | D4       | 3.146      | 0.058       | 0.108   | 0.051      | 0.004      | 0.036            | 0.307     | 3.71        | 4  |
| D5   | D5       | 1.913      | 0.127       | 0.503   | 0.108      | 0.054      | 0.033            | 0.203     | 2.94        | 5  |
| D6   | D6       | 0.289      | 0.018       | 0.054   | 0.022      | 0.004      | 0                | 0.04      | 0.427       | 6  |
| D7   | D7       | 0.962      | 0.029       | 0.145   | 0.025      | 0.033      | 0                | 0.101     | 1.295       | 7  |
| D8   | D8       | 0.622      | 0.083       | 0.112   | 0.011      | 0.029      | 0                | 0.029     | 0.886       | 8  |
| D9   | D9       | 2.47       | 0.061       | 0.087   | 0.025      | 0.033      | 0                | 0.268     | 2.944       | 9  |
| D10  | D10      | 1.331      | 0.043       | 0.094   | 0.051      | 0.083      | 0                | 0.094     | 1.696       | 10 |
| D11  | D11      | 0.419      | 0.014       | 0.004   | 0.007      | 0          | 0                | 0.022     | 0.467       | 11 |
| D12  | D12      | 0.278      | 0.036       | 0.025   | 0.029      | 0.029      | 0                | 0.04      | 0.438       | 12 |



LAYOUT DWG: N / A | T-LAYOUT NO.: PWALmym035

DRAWING NUMBER: N / A

SCALE - 1:17,000 @ A3

#### ENVIRONMENTAL STATEMENT & PLANNING APPLICATION 2024

THIS DRAWING IS THE PROPERTY OF RENEWABLE ENERGY SYSTEMS LTD. AND NO REPRODUCTION MAY BE MADE IN WHOLE OR IN PART WITHOUT PERMISSION