

Key:

- Site Boundary
- 10km study area
- Conservation Areas

0 1,000 2,000 3,000 4,000 m

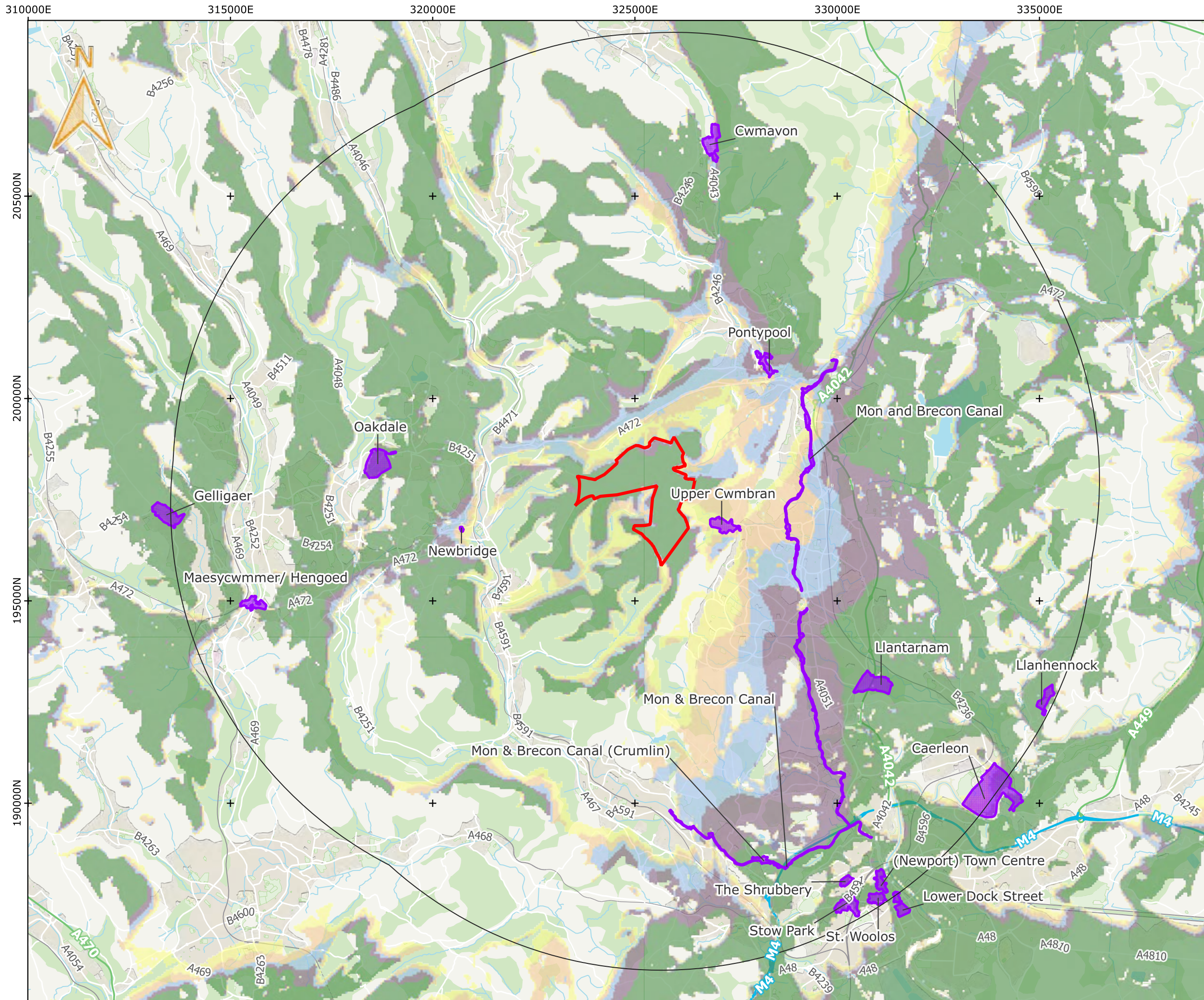


Mynydd Maen Wind Farm

Figure 11

Conservation Areas within 10km of the Mynydd Maen Wind Farm

Project No.07861A | 29/10/2023 | Drawn By: JM



Key:

- Site Boundary
- 10km study area
- Conservation Areas

Number of Turbines Visible

- 1 to 3 turbines
- 4 to 6 turbines
- 7 to 9 turbines
- 10 to 12 turbines
- 13 turbines

0 1,000 2,000 3,000 4,000 m

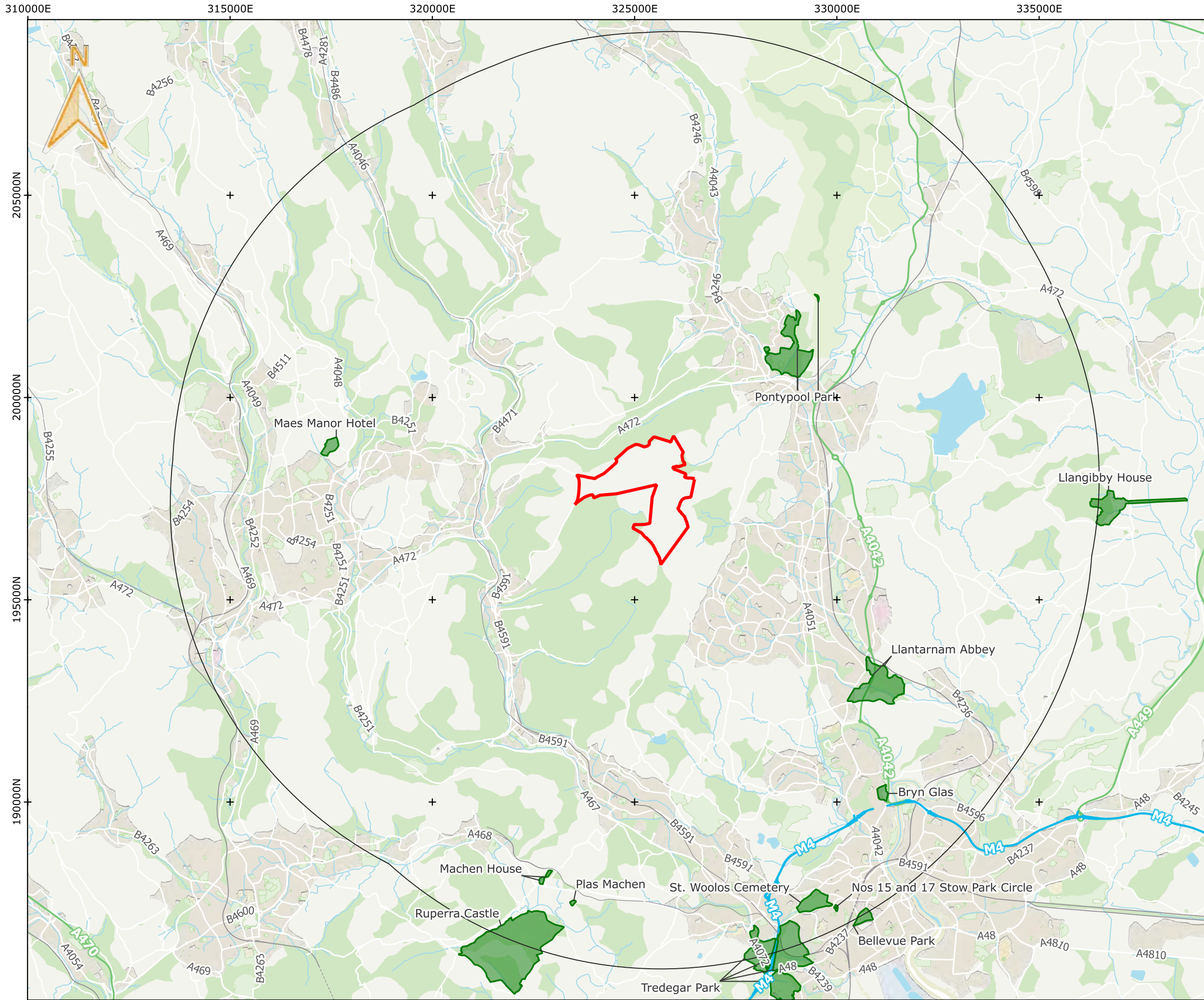


Mynydd Maen Wind Farm

Figure 12

Conservation Areas within the Zone of Theoretical Visibility

Project No.07861A | 29/10/2023 | Drawn By: JM



Key:

- Site Boundary
- 10km study area
- Registered Historic Parks and Gardens

0 1,000 2,000 3,000 4,000 m



Mynydd Maen Wind Farm

Figure 13

Registered Historic Parks and Gardens within 10km of the Mynydd Maen Wind Farm

Project No.07861A | 29/10/2023 | Drawn By: JM

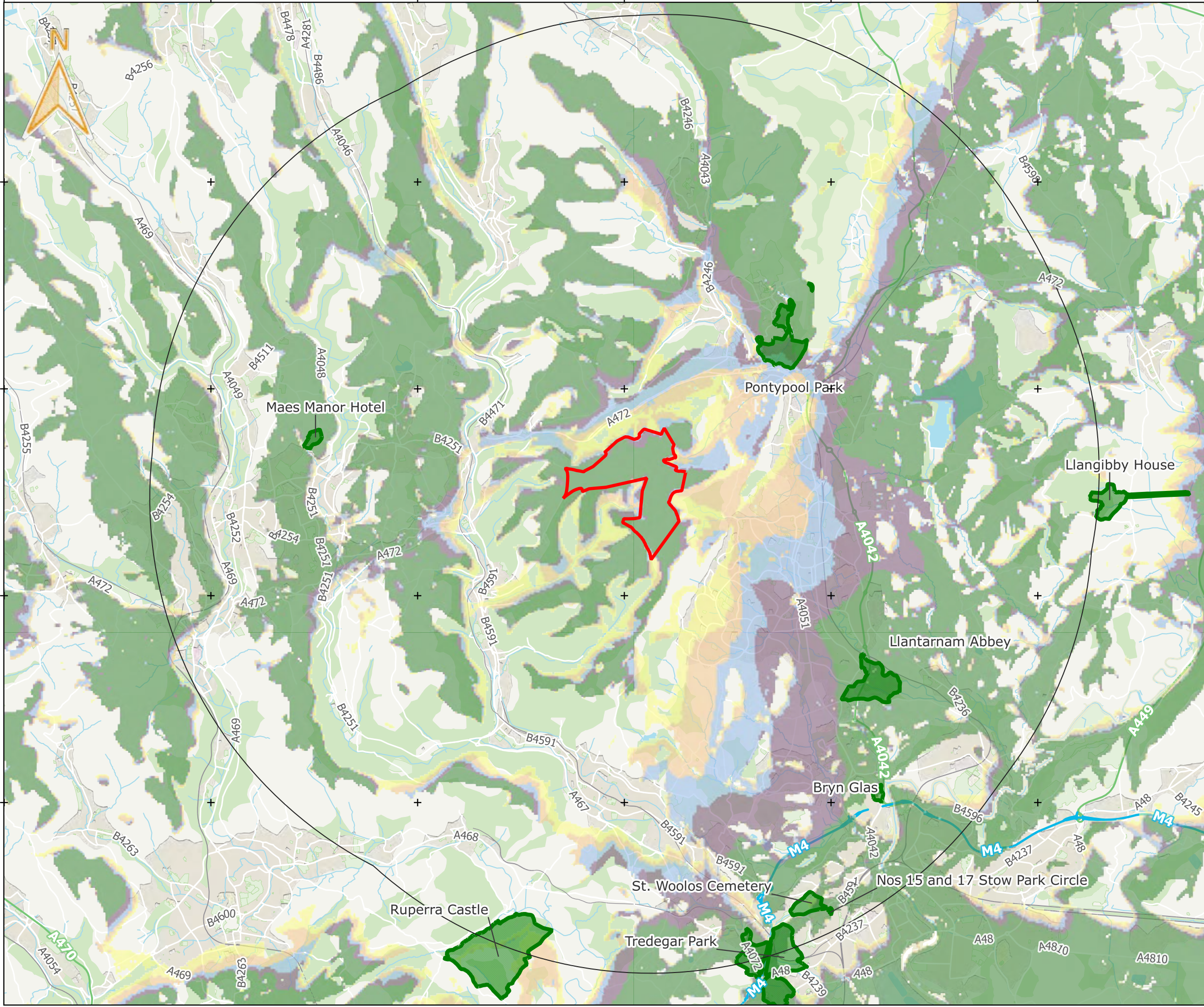
310000E 315000E 320000E 325000E 330000E 335000E

N000502

N000002

N000561

N000061



Key:

- Site Boundary
- 10km study area
- Registered Historic Parks and Gardens
- Number of Turbines Visible
- 1 to 3 turbines
- 4 to 6 turbines
- 7 to 9 turbines
- 10 to 12 turbines
- 13 turbines

0 1,000 2,000 3,000 4,000 m



Mynydd Maen Wind Farm

Figure 14

Registered Historic Parks and Gardens within the Zone of Theoretical Visibility

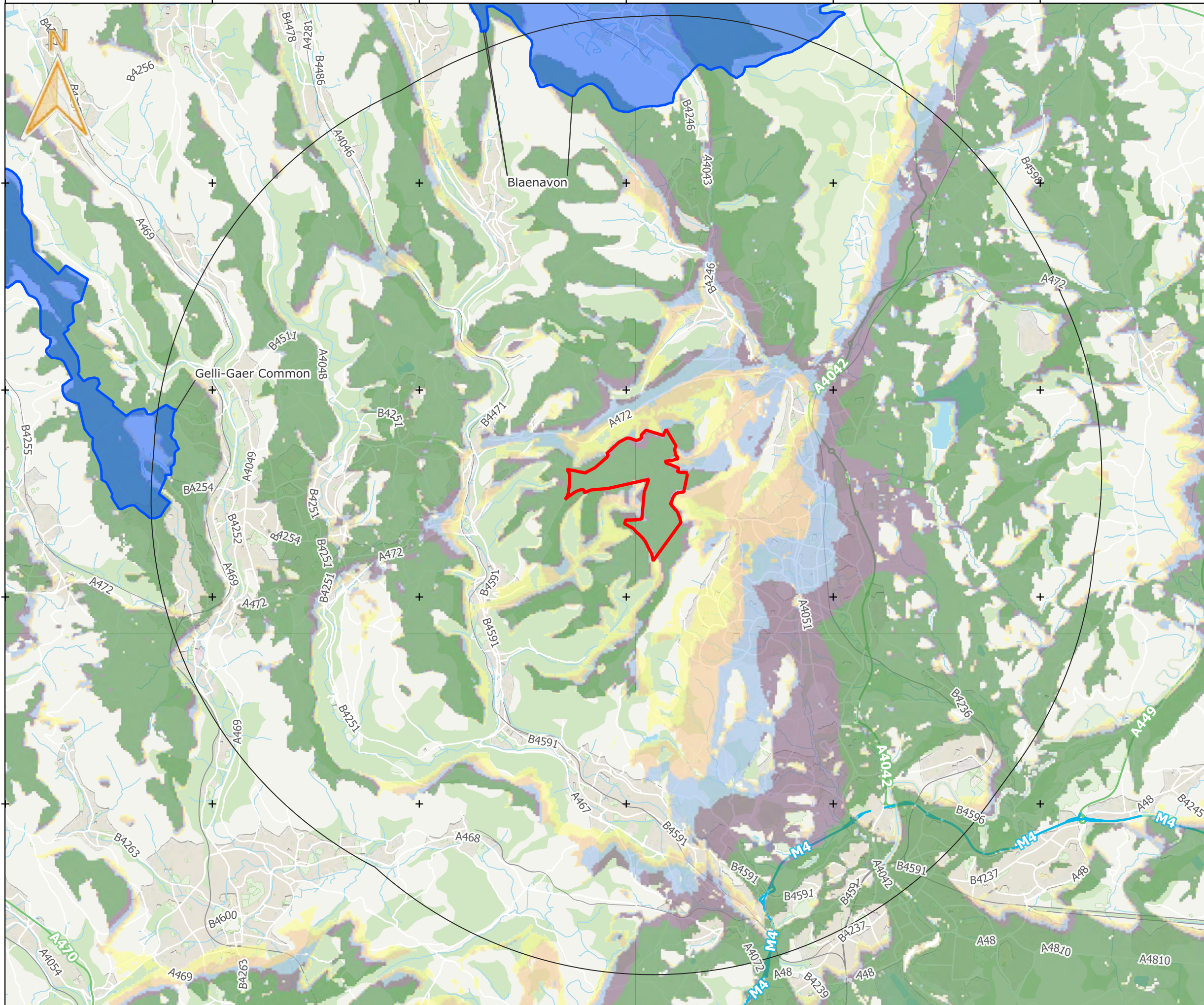
310000E 315000E 320000E 325000E 330000E 335000E

205000N

200000N

195000N

190000N



Key:

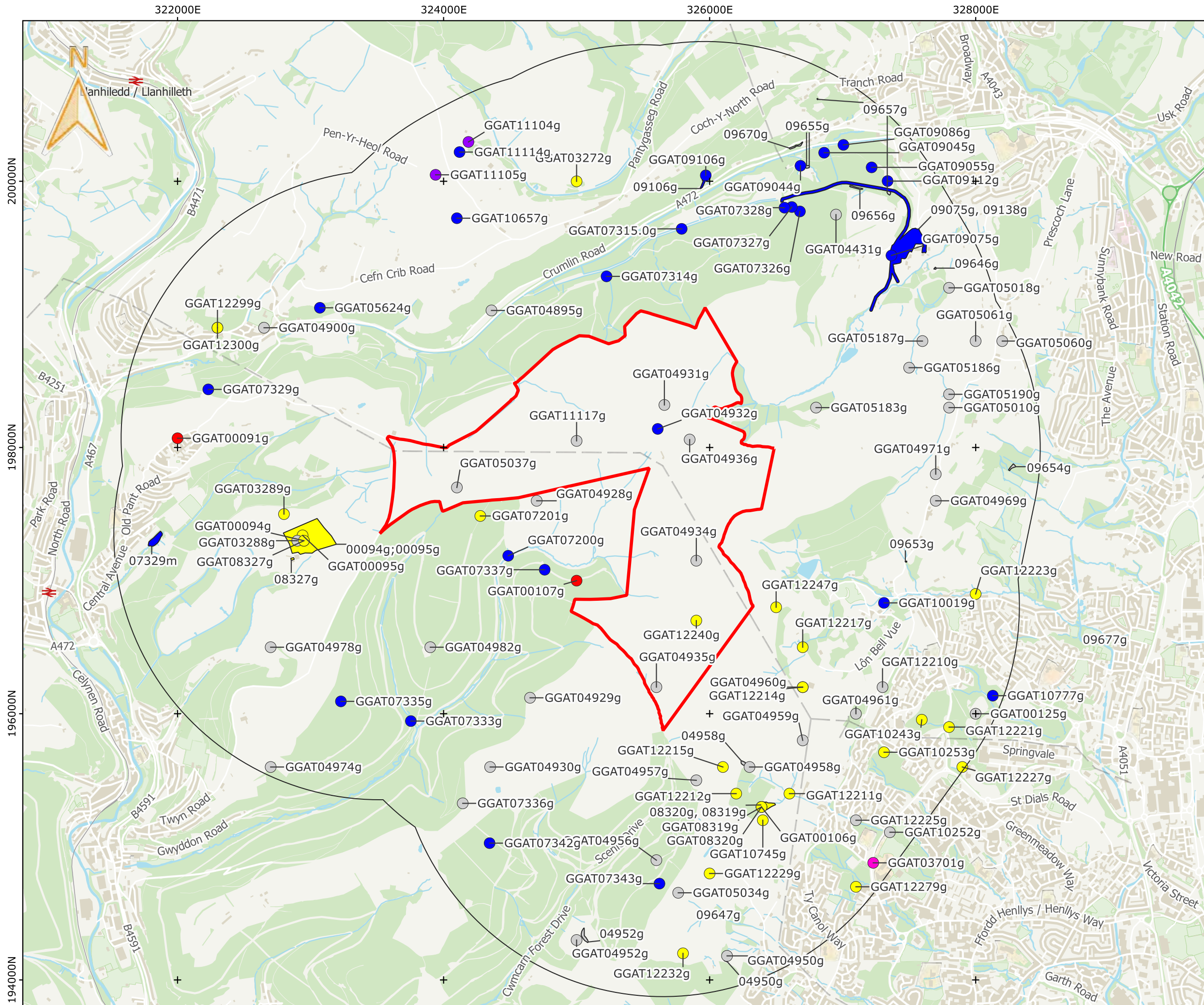
- Site Boundary
- 10km study area
- Registered Historic Parks and Gardens
- Number of turbines visible
- 1 to 3 turbines
- 4 to 6 turbines
- 7 to 9 turbines
- 10 to 12 turbines
- 13 turbines



Mynydd Maen Wind Farm

Figure 15

Registered Historic Landscapes within 10km of the Mynydd Maen Wind Farm and Zone of Theoretical Visibility



Key:

- Site Boundary
- 2km Study Area

GGAT HER point data

- Neolithic
- Bronze Age
- Medieval
- Modern
- Multiperiod
- Unknown N/A

GGAT HER polygon data

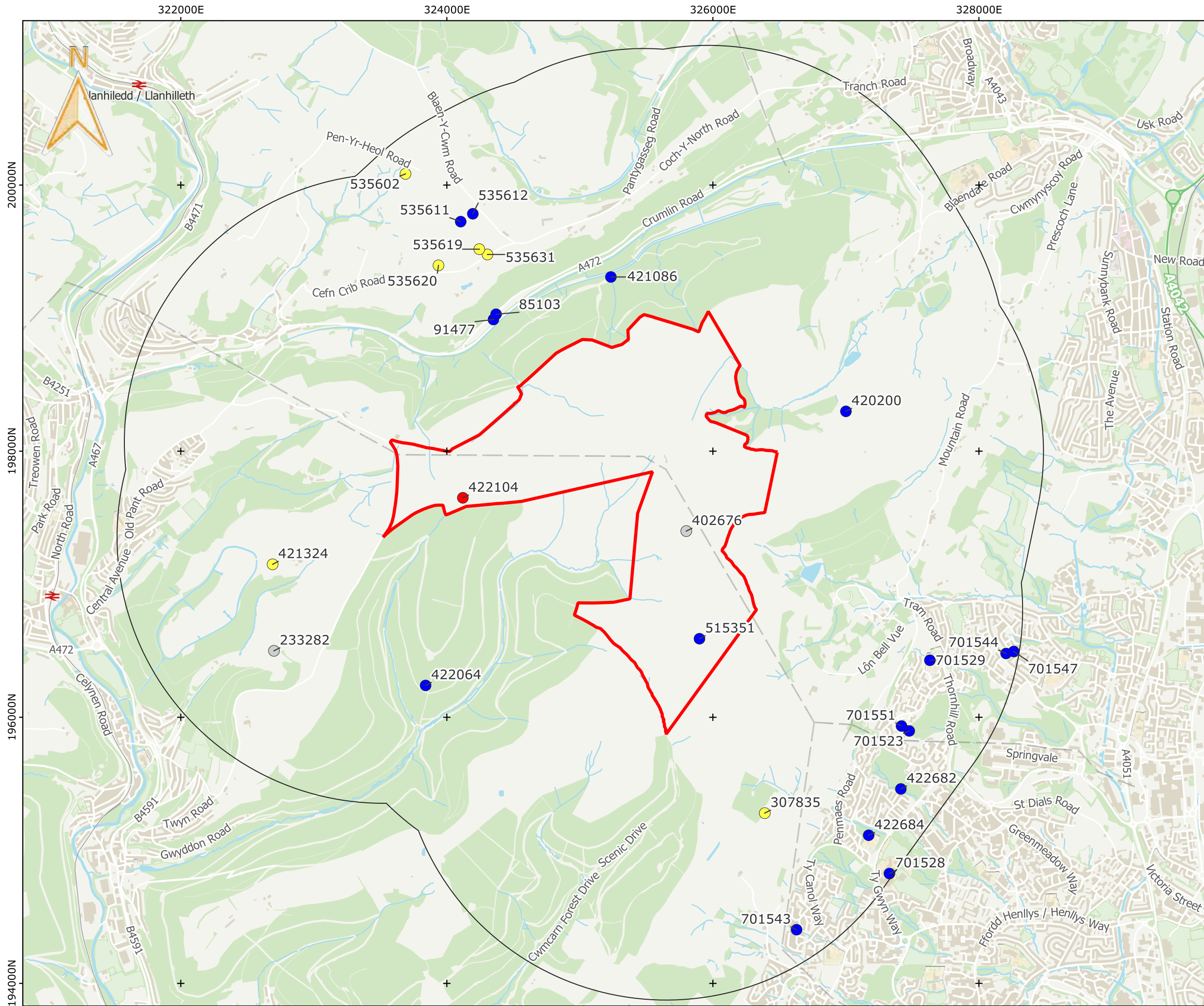
- Medieval
- Modern
- Unknown

0 250 500 750 1,000 m



Mynydd Maen Wind Farm

Figure 16
Glamorgan Gwent Historic Environment Records within 2km of the proposed Mynydd Maen Wind Farm (excluding post medieval sites)



Key:

- Site Boundary
- 2km Study Area

National Monument Record data

- Bronze Age
- Medieval
- Modern
- Unknown

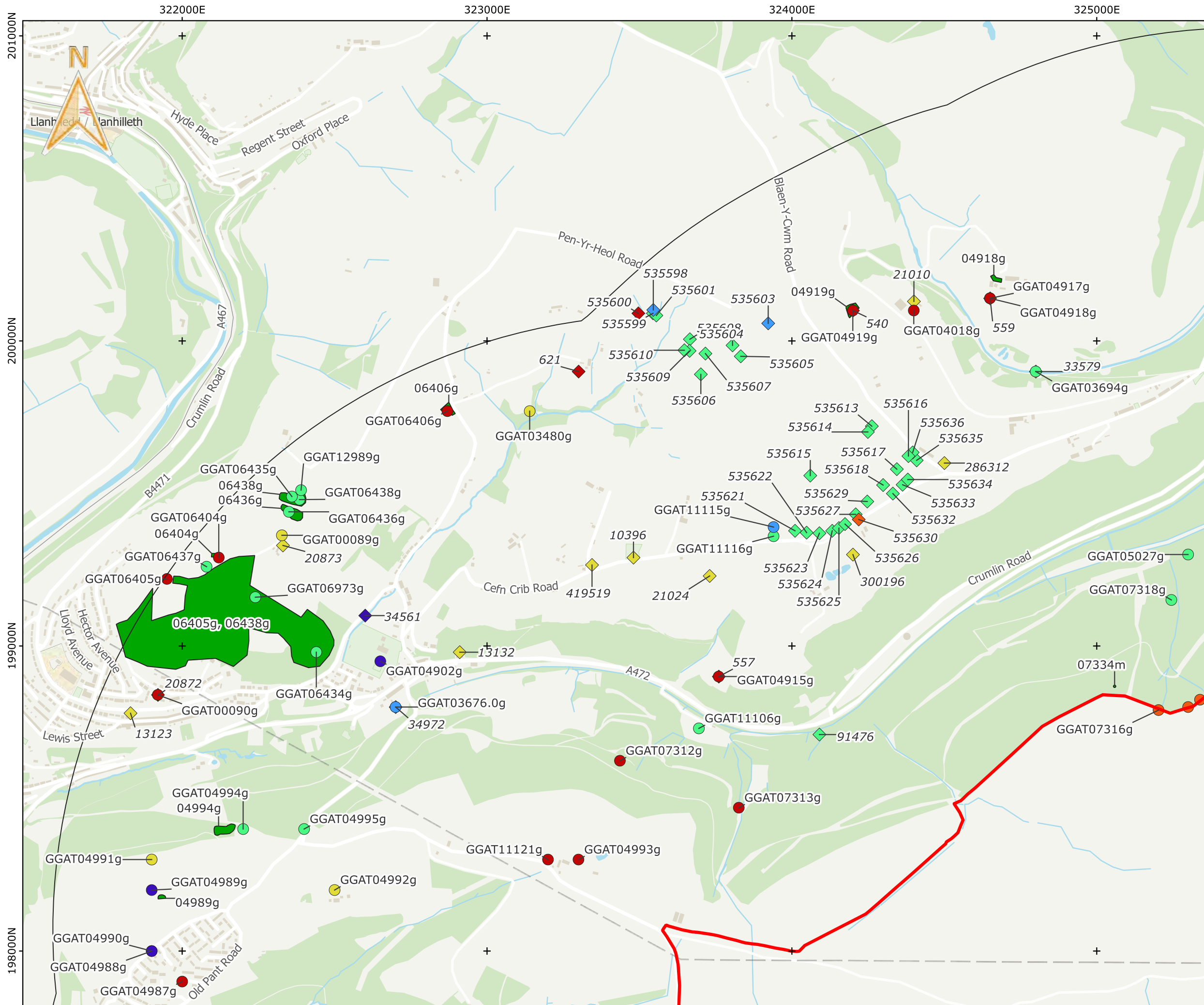
0 250 500 750 1,000 m



Mynydd Maen Wind Farm

Figure 17

National Monument Records within 2km of the proposed Mynydd Maen Wind Farm (excluding post medieval sites)



Key:

- Site Boundary
- 2km Study Area

GGAT HER point data

Post Medieval Site Types

- Agriculture and Subsistence
- Boundary Markers
- Domestic / Civil / Religious
- Industrial
- Transport
- Water Supply and Drainage

National Monument Record

Post Medieval Site Types

- Agriculture and Subsistence
- Boundary Markers
- Domestic / Civil / Religious
- Industrial
- Transport
- Water Supply and Drainage

GGAT HER polygon data

- Post Medieval

0 100 200 300 400 500 m

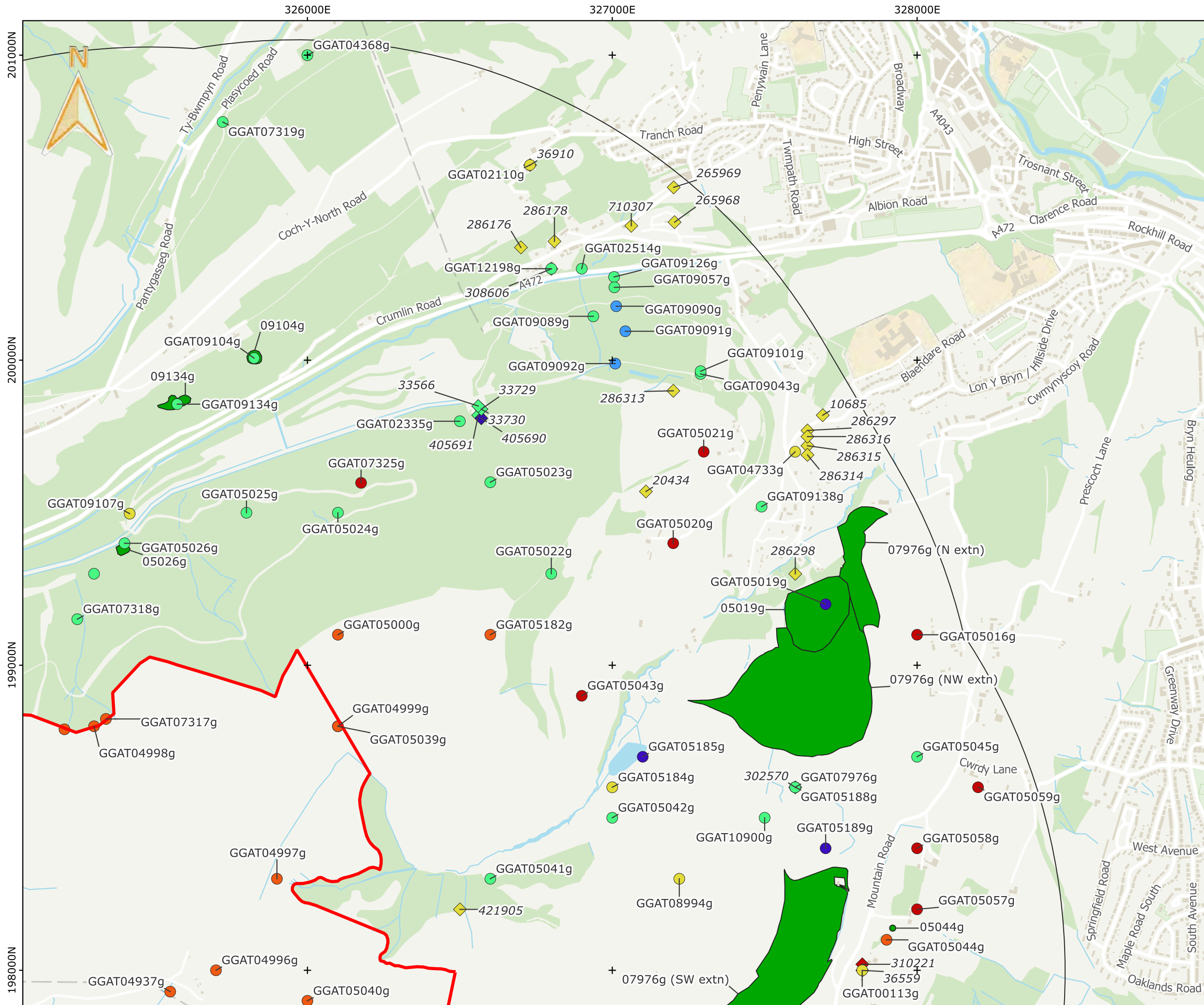


Mynydd Maen Wind Farm

Figure 18

Glamorgan Gwent Historic Environment Record and National Monument Record of post medieval date within 2km of the proposed Mynydd Maen Wind Farm - Northwestern part

Project No.07861A | 29/10/2023 | Drawn By: JM



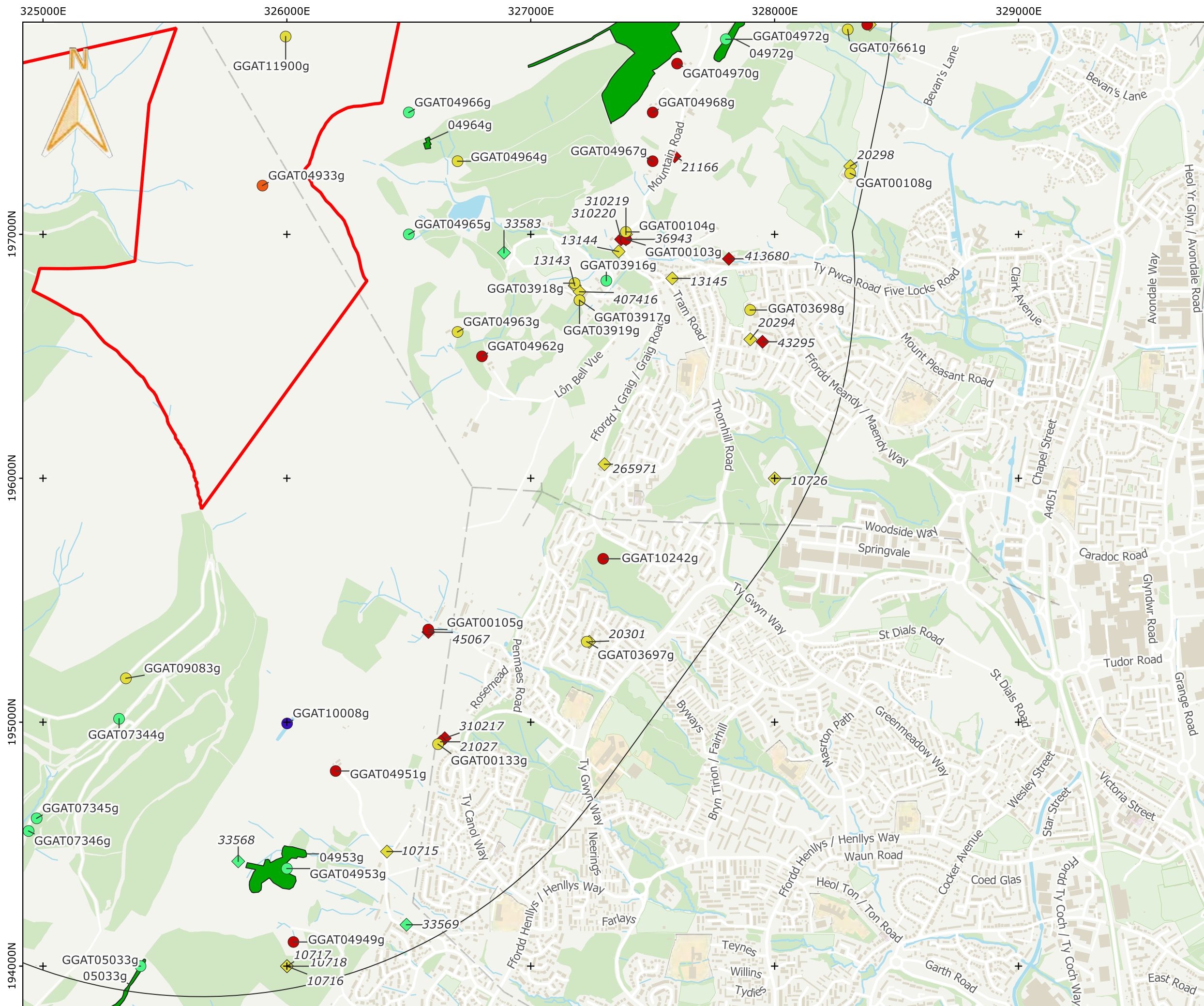
Key:

- Site Boundary
- 2km Study Area
- GGAT HER point data Post Medieval Site Types
 - Agriculture and Subsistence
 - Boundary Markers
 - Domestic / Civil / Religious
 - Industrial
 - Transport
 - Water Supply and Drainage
- National Monument Record Post Medieval Site Types
 - Agriculture and Subsistence
 - Boundary Markers
 - Domestic / Civil / Religious
 - Industrial
 - Transport
 - Water Supply and Drainage
- GGAT HER polygon data Post Medieval

0 100 200 300 400 500 m



Mynydd Maen Wind Farm
Figure 19
 Glamorgan Gwent Historic Environment Record and National Monument Records of post medieval date within 2km of the proposed Mynydd Maen Wind Farm - Northeastern part



Key:

- Site Boundary
- 2km Study Area

GGAT HER point data

Post Medieval Site Types

- Agriculture and Subsistence
- Boundary Markers
- Domestic / Civil / Religious
- Industrial
- Transport
- Water Supply and Drainage

National Monument Record

Post Medieval Site Types

- Agriculture and Subsistence
- Boundary Markers
- Domestic / Civil / Religious
- Industrial
- Transport
- Water Supply and Drainage

GGAT HER polygon data

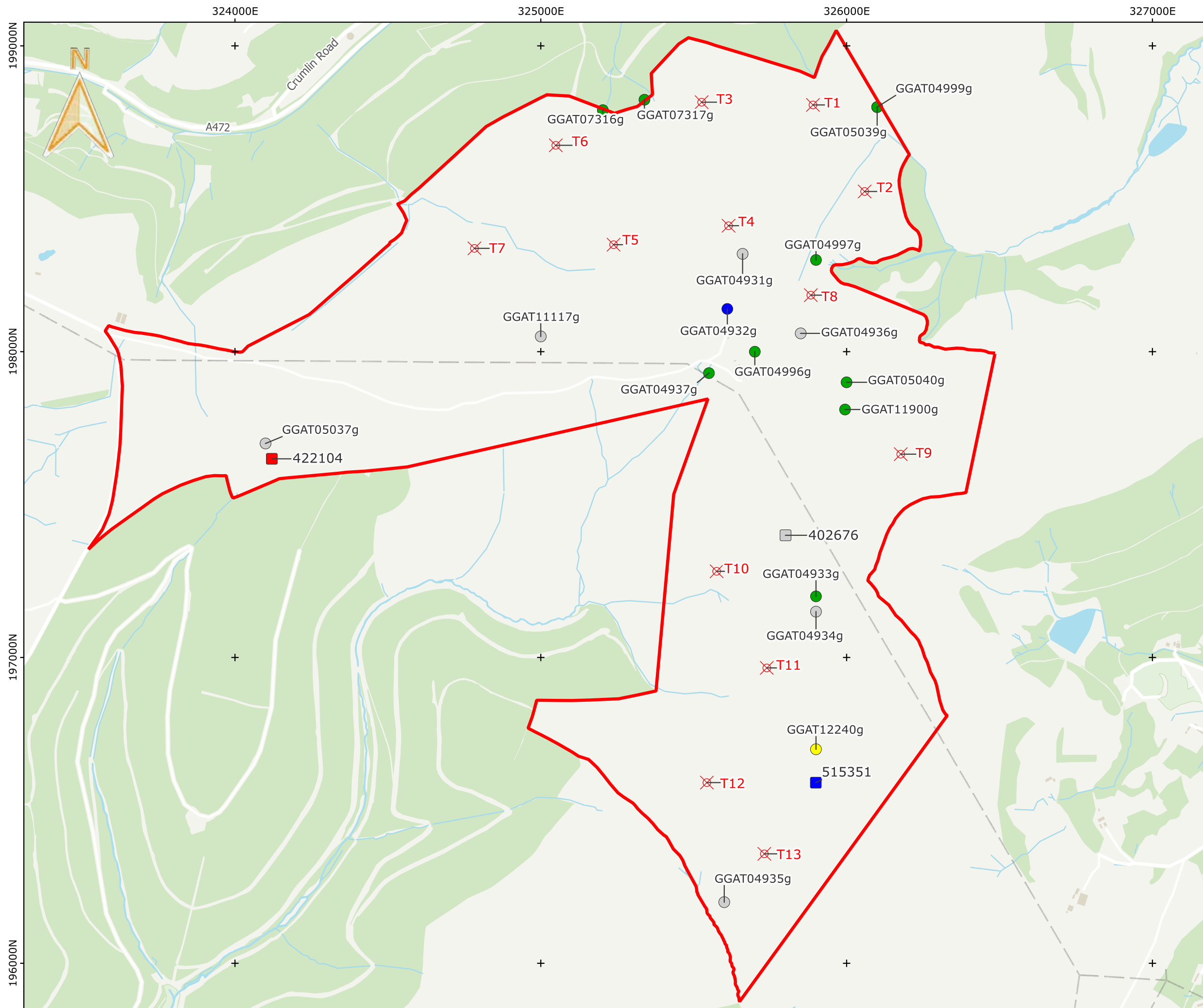
- Post Medieval



Mynydd Maen Wind Farm

Figure 20

Glamorgan Gwent Historic Environment Record and National Monument Records of post medieval date within 2km of the proposed Mynydd Maen Wind Farm - Southeastern part



Key:

- Site Boundary

GGAT HER data

- Medieval
- Post Medieval
- Modern
- Unknown N/A

National Monuments Record data

- Bronze Age
- Modern
- Unknown
- Proposed Wind Turbines

0 100 200 300 400 500 m



Mynydd Maen Wind Farm
Figure 22
 Glamorgan Gwent Historic Environment Record and National Monument Record within the site boundary of the proposed Mynydd Maen Wind Farm